

Bylaw #744

ORIGINAL PLAN MATERIAL
PLASTIC MATERIAL - MYLAR
GAUGE - 0.003 INCH
PROCESS - PHOTOGRAPHIC
INK - SPECIAL 'T'

SCHEDULE			
PART	LOCATION	INST. NO.	AREA
I	LOT 14, CONCESSION II	9024 A (FIRSTLY)	0.0400 ha. ±

I REQUIRE THIS PLAN TO BE
DEPOSITED UNDER THE
REGISTRY ACT

Nov. 9, 1981
Date

Douglas A. Lane
Douglas A. Lane

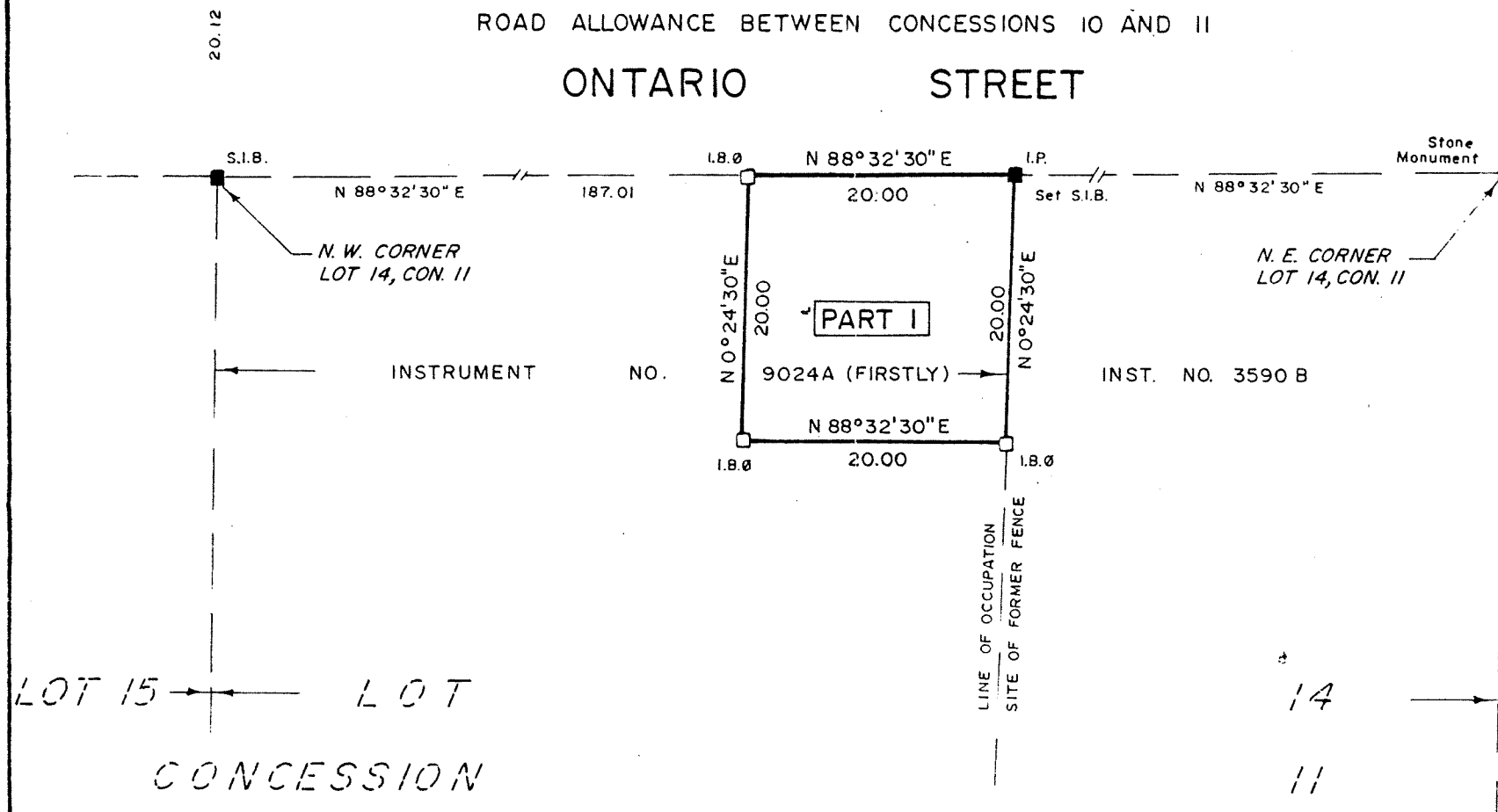
PLAN 59 R 3642

RECEIVED AND DEPOSITED

Nov. 9, 1981
Date

Yvette Palmeri
O.E.P.
LAND REGISTRAR FOR THE
REGISTRY DIVISION OF
NIAGARA SOUTH (59)

LOT 14, CONCESSION 10



METRIC
MEASUREMENTS SHOWN
HEREON ARE IN METRES
AND MAY BE CONVERTED
TO FEET BY DIVIDING
BY 0.3048.

PLAN OF SURVEY OF
PART OF LOT 14, CONCESSION II
TOWNSHIP OF PELHAM
NOW IN THE
TOWN OF PELHAM
REGIONAL MUNICIPALITY OF NIAGARA

SCALE 1:500
5m 0 10 20m

BEARING NOTE

Surveyor's Certificate

- I CERTIFY THAT:
- 1) This survey and plan are correct and in accordance with The Surveys Act and The Registry Act and the regulations made thereunder;
 - 2) The survey was completed on the 3 day of Nov. 1981